

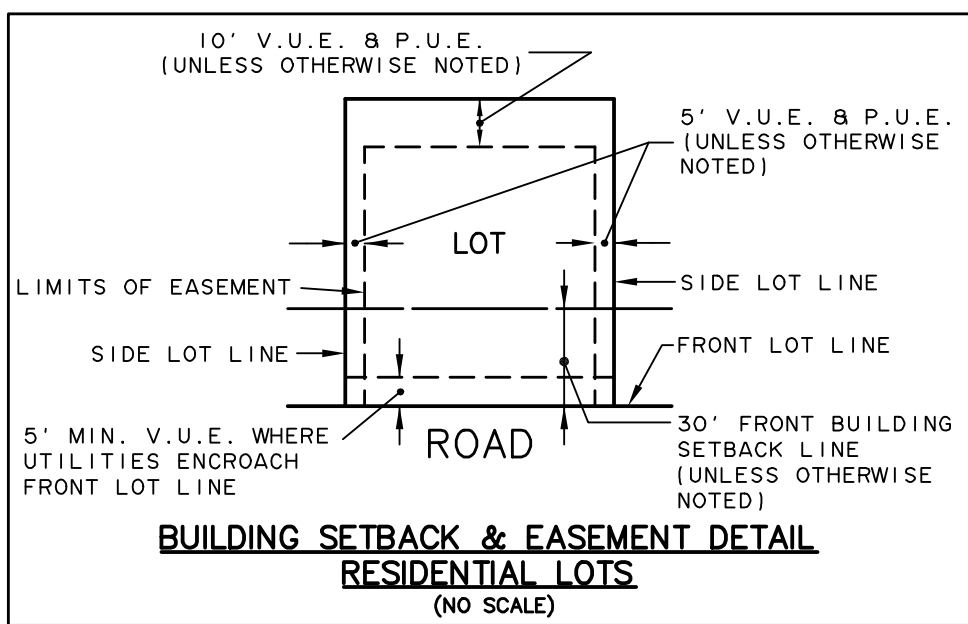
FINAL PLAT OF SUBDIVISION FOR TRAILS OF WOODS CREEK PHASE 2

BEING A PART OF THE SOUTHEAST QUARTER OF SECTION 25,
TOWNSHIP 43 NORTH, RANGE 7 EAST OF THE THIRD PRINCIPAL MERIDIAN,
IN MCHENRY COUNTY, ILLINOIS.



VICINITY MAP

SITE LOCATION



**BUILDING SETBACK & EASEMENT DETAIL
RESIDENTIAL LOTS
(NO SCALE)**

THIS PLAT WAS SUBMITTED TO THE COUNTY RECORDER FOR THE PURPOSES OF RECORDING BY:

(PRINT NAME)

(ADDRESS)

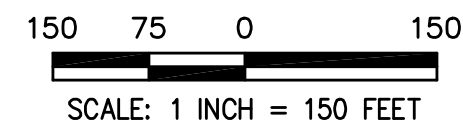
(CITY/TOWN) (STATE) (ZIP CODE)

TOTAL AREA OF SUBDIVISION

34.785 ACRES
(MORE OR LESS)

PARCEL INDEX NUMBERS

PARTS OF
18-25-400-003
18-25-400-023
18-25-400-029
18-25-400-030
18-25-426-004
MCHENRY COUNTY



NOTES

3/4 INCH IRON PIPE SET AT ALL LOT CORNERS AND POINTS OF CURVATURE UNLESS OTHERWISE NOTED. ROADWAY MEDIAN OUTLOT BOUNDARIES WILL BE AT THE BACK OF CURB AS CONSTRUCTED.

ALL MEASUREMENTS ARE SHOWN IN FEET AND DECIMAL PARTS THEREOF.

DIMENSIONS SHOWN ALONG CURVES ARE ARC DISTANCES.

DIMENSIONS ENCLOSED WITH () ARE RECORD DATA. ALL OTHER DIMENSIONS ARE MEASURED.

ALL EASEMENTS ARE HEREBY GRANTED UNLESS OTHERWISE NOTED.

V.U.E. - INDICATES VILLAGE UTILITY EASEMENT HEREBY GRANTED. SEE PROVISIONS FOR DETAILS.

D.E. - INDICATES DRAINAGE EASEMENT HEREBY GRANTED. SEE PROVISIONS FOR DETAILS.

P.U.E. - INDICATES PUBLIC UTILITY EASEMENT HEREBY GRANTED. SEE PROVISIONS FOR DETAILS.

B.L. - BUILDING SETBACK LINE

THE BEARINGS SHOWN ARE BASED UPON THE SOUTH LINE OF THE SOUTHEAST QUARTER OF SECTION 25-43-7 BEING N 89°44'12" W (ASSUMED).

GAP IN LOT & OUTLOT NUMBERING DUE TO THE PREDEFINED LOT NUMBERING WITHIN THE ENTIRE TRAILS OF WOODS CREEK DEVELOPMENT.

OUTLOTS K, L AND M TO BE OWNED AND MAINTAINED BY THE HOMEOWNERS ASSOCIATION.

F.I.P. = FOUND IRON PIPE (ø AS SHOWN)
F.I.R. = FOUND IRON ROD (ø AS SHOWN)

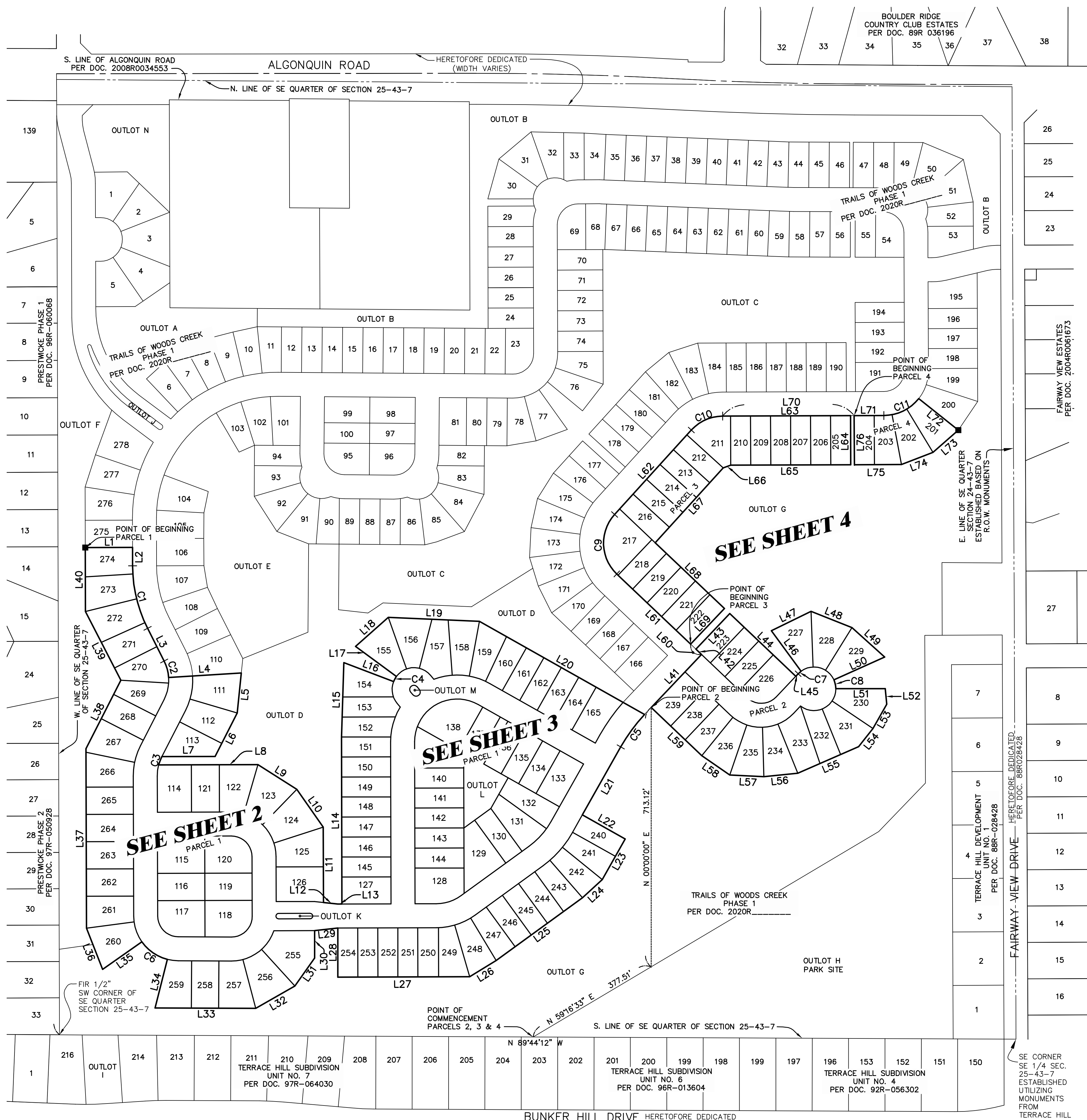
LINE	BEARING	LENGTH	LINE	BEARING	LENGTH	LINE	BEARING	LENGTH
L1	N 89°49'23" E	130.00'	L26	S 58°27'51" W	85.69'	L51	N 89°52'22" E	135.92'
L2	S 00°10'37" E	50.95'	L27	S 89°51'16" W	362.28'	L52	N 05°41'19" W	42.95'
L3	S 26°49'37" E	100.79'	L28	N 00°08'44" W	135.00'	L53	S 29°33'07" W	76.74'
L4	N 86°25'53" E	200.24'	L29	S 83°34'49" W	64.05'	L54	N 38°14'14" E	63.79'
L5	S 05°48'22" W	110.37'	L30	S 00°08'44" E	75.27'	L55	N 66°26'12" E	182.55'
L6	S 27°02'53" W	134.12'	L31	S 35°10'37" W	94.44'	L56	S 84°12'18" W	93.84'
L7	S 89°49'56" W	146.18'	L32	S 60°17'53" W	124.08'	L57	N 87°13'01" W	93.72'
L8	N 89°49'56" E	126.99'	L33	N 89°44'12" W	276.63'	L58	N 55°17'08" W	93.72'
L9	S 57°33'22" E	126.44'	L34	N 14°13'44" E	137.71'	L59	N 46°27'33" W	192.10'
L10	S 34°57'54" E	126.99'	L35	S 54°54'37" W	132.00'	L60	N 46°27'33" W	41.37'
L11	S 00°10'37" E	207.05'	L36	N 21°22'03" W	121.43'	L61	N 46°27'33" W	280.12'
L12	S 83°52'15" E	39.36'	L37	N 00°10'37" W	493.66'	L62	N 42°16'16" E	313.74'
L13	N 89°51'16" E	11.69'	L38	N 27°02'53" E	211.41'	L63	N 89°46'26" E	351.77'
L14	N 00°08'44" W	459.09'	L39	N 27°15'15" W	212.48'	L64	S 00°13'34" E	135.00'
L15	N 01°44'07" E	204.61'	L40	N 00°10'37" W	176.09'	L65	S 89°46'26" W	330.00'
L16	S 69°06'11" E	146.44'	L41	N 43°32'27" E	201.00'	L66	S 69°48'40" W	22.08'
L17	N 53°33'46" W	139.28'	L42	N 46°27'33" W	21.17'	L67	S 42°16'16" W	277.99'
L18	N 48°19'47" E	120.20'	L43	N 43°32'27" E	135.00'	L68	S 46°27'33" E	262.52'
L19	S 87°29'32" E	250.91'	L44	S 46°27'33" E	250.36'	L69	S 43°32'27" W	135.00'
L20	S 60°33'49" E	521.20'	L45	N 43°32'27" E	9.67'	L70	N 89°46'26" E	361.77'
L21	S 29°26'11" W	214.37'	L46	N 36°14'30" W	138.14'	L71	N 89°46'26" E	81.66'
L22	S 60°33'57" E	135.00'	L47	N 63°58'33" E	121.17'	L72	S 51°28'48" E	139.39'
L23	S 29°26'11" W	128.37'	L48	S 68°24'57" E	121.17'	L73	S 49°00'59" W	92.75'
L24	S 47°24'37" W	73.92'	L49	S 47°58'51" E	121.17'	L74	S 68°47'00" W	92.75'
L25	S 53°59'29" W	293.12'	L50	S 65°49'25" W	153.13'	L75	S 89°46'26" W	129.45'
						L76	N 00°13'34" W	135.00'

LEGEND

- SUBDIVISION BOUNDARY LINE (Heavy Solid Line)
- LOT LINE/PROPERTY LINE (Solid Line)
- ADJACENT LOT LINE/PROPERTY LINE (Light Solid Line)
- BUILDING LINE (Long Dashed Lines)
- EASEMENT LINE/LIMITS OF EASEMENT (Short Dashed Lines)
- CENTERLINE (Single Dashed Lines)
- LINE USED TO LOCATE EXCEPTIONS IN LEGAL DESCRIPTIONS (Single Dotted Lines)
- - SET CONCRETE MONUMENT

CURVE TABLE

CURVE	RADIUS	LENGTH	BEARING
C1	383.00'	178.14'	S 13°30'07" E
C2	117.00'	47.49'	S 15°11'52" E
C3	117.00'	24.74'	S 20°59'26" E
C4	60.00'	16.27'	N 28°40'02" E
C5	467.00'	110.88'	S 36°14'19" W
C6	123.00'	87.33'	N 55°25'50" W
C7	60.00'	10.70'	N 48°38'58" E
C8	60.00'	25.18'	S 12°09'07" E
C9	117.00'	181.19'	N 02°05'39" W
C10	117.00'	97.00'	N 66°01'21" E
C11	123.00'	110.03'	N 64°08'49" E

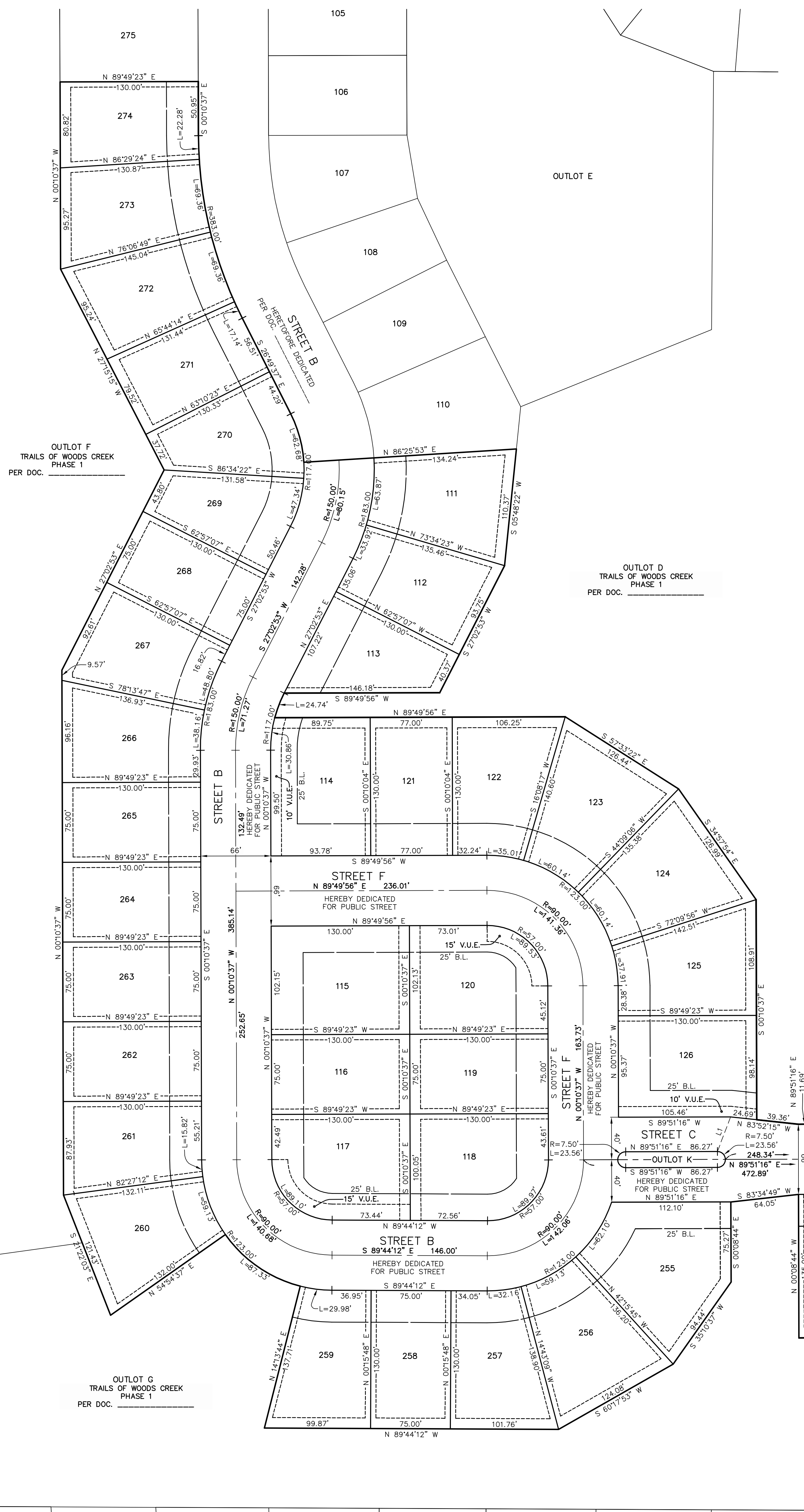
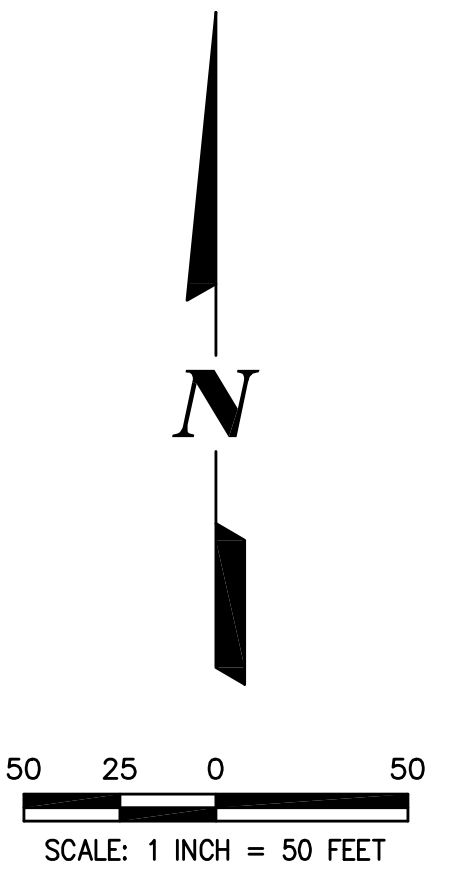


DRAWING PATH: F:\V02138\UNGS\SURVEY\DRAWINGS\PLATS\SUBPLAT-2.DWG
PLOT FILE CREATED: 7/9/2020 BY: TONY BLUS

PREPARED FOR:
PULTE HOME COMPANY, LLC
1900 E. SCHAUMBURG ROAD, SUITE 300
SCHAUMBURG, IL 60173
(847) 230-2592

CEMCON, Ltd.
Consulting Engineers, Land Surveyors & Planners
2280 White Oak Circle, Suite 100 Aurora, Illinois
60502-9675 PH: 630.862.2100 FAX: 630.862.2199
www.cemcon.com

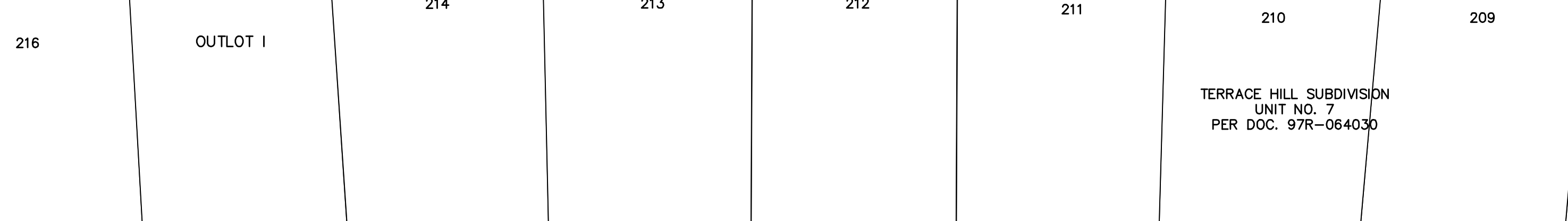
DISC NO.: 402136 FILE NAME: SUBPLAT-2
DRAWN BY: AJB FLD. BK. / PG. NO.: D83\51-54
COMPLETION DATE: 07-09-20 JOB NO.: 402.136
Copyright © 2020 Cemcon, Ltd. All rights reserved.



LINE TABLE		
LINE	BEARING	LENGTH
L1	S 20°52'39" W	34.82'

REFER TO SHEET 3

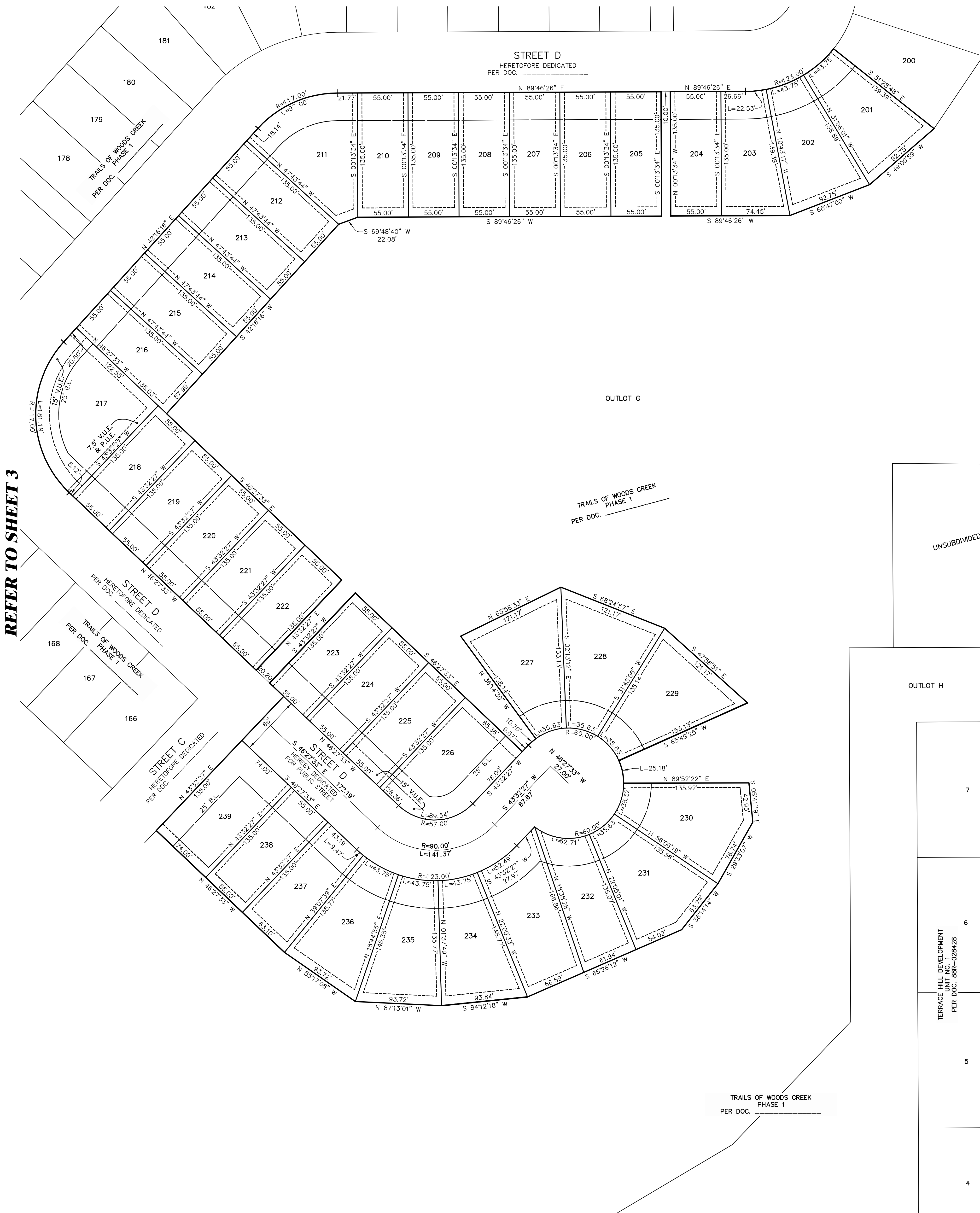
PLOT FILE CREATED: 7/9/2020 BY: TONY BLUS
DRAWING PATH: F:\02136\000\SURVEY\DRAWINGS\PLATS\SUBPLAT-2.DWG



PREPARED BY:
CEMCON, Ltd.
 Consulting Engineers, Land Surveyors & Planners
 2280 White Oak Circle, Suite 100 Aurora, Illinois
 60502-9675 PH: 630.862.2100 FAX: 630.862.2199
 www.cemcon.com
 DISC NO.: 402136 FILE NAME: SUBPLAT-2
 DRAWN BY: AJB FLD. BK. / PG. NO.: D83\51-54
 COMPLETION DATE: 07-09-20 JOB NO.: 402.136
 Copyright © 2020 Cemcon, Ltd. All rights reserved.



50 25 0 50
SCALE: 1 INCH = 50 FEET



REFER TO SHEET 3



PREPARED BY:
CEMCON, Ltd.

Consulting Engineers, Land Surveyors & Planners
2280 White Oak Circle, Suite 100 Aurora, Illinois
60502-9675 PH: 630.862.2100 FAX: 630.862.2199
www.cemcon.com

DISC NO.: 402136 FILE NAME: SUBPLAT-2
DRAWN BY: AJB FLD. BK. / PG. NO.: D83\51-54
COMPLETION DATE: 07-09-20 JOB NO.: 402.136
Copyright © 2020 Cemcon, Ltd. All rights reserved.