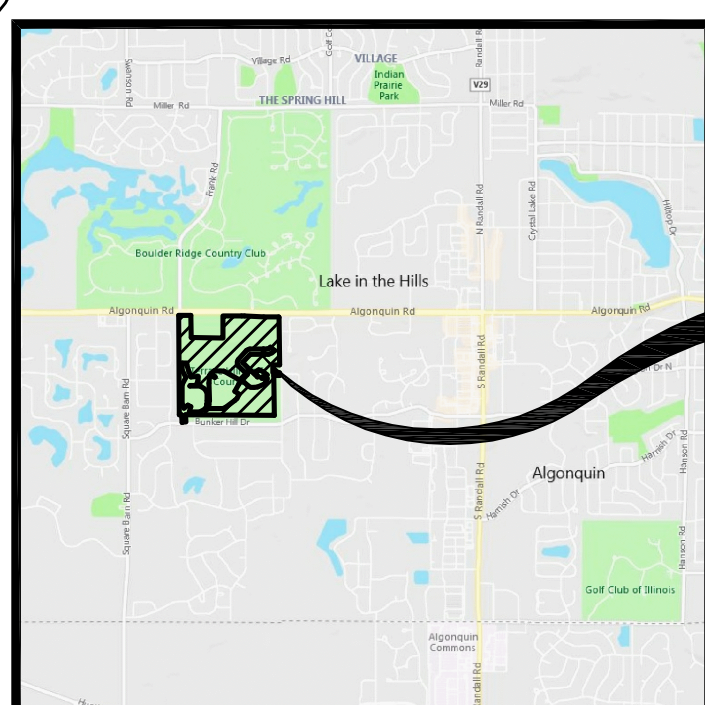


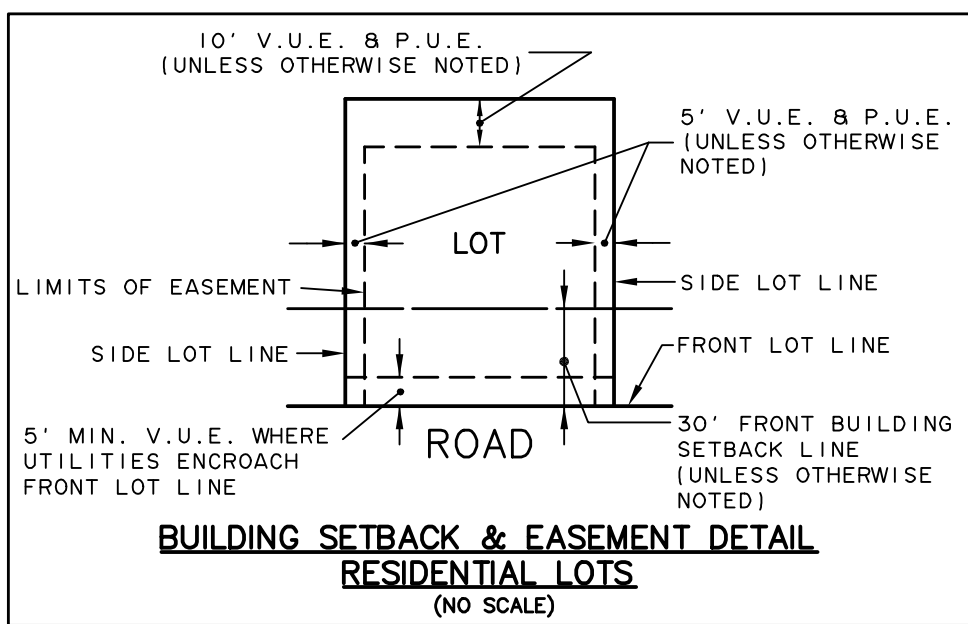
FINAL PLAT OF SUBDIVISION FOR TRAILS OF WOODS CREEK PHASE 1



VICINITY MAP

SITE LOCATION

BEING A PART OF THE SOUTHEAST QUARTER OF SECTION 25 AND NORTHEAST QUARTER OF SECTION 36, TOWNSHIP 43 NORTH, RANGE 7 EAST OF THE THIRD PRINCIPAL MERIDIAN, IN MCHENRY COUNTY, ILLINOIS.



THIS PLAT WAS SUBMITTED TO THE COUNTY RECORDER FOR THE PURPOSES OF RECORDING BY:

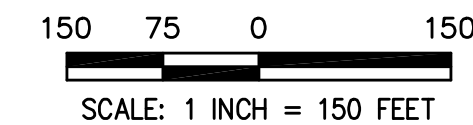
(PRINT NAME)

(ADDRESS)

(CITY/TOWN) (STATE) (ZIP CODE)

TOTAL AREA OF SUBDIVISION
103.656 ACRES
(MORE OR LESS)

PARCEL INDEX NUMBERS
PART OF 18-25-400-003
PART OF 18-25-400-023
18-25-400-026
18-25-426-001
18-25-426-002
18-25-426-003
18-25-426-004
18-25-426-005
18-25-400-029
PART OF 18-25-400-030
18-36-205-002
MCHENRY COUNTY



LEGEND

- SUBDIVISION BOUNDARY LINE (Heavy Solid Line)
- LOT LINE/PROPERTY LINE (Solid Line)
- ADJACENT LOT LINE/PROPERTY LINE (Light Solid Line)
- BUILDING LINE (Long Dashed Lines)
- EASEMENT LINE/LIMITS OF EASEMENT (Short Dashed Lines)
- CENTERLINE (Single Dashed Lines)
- LINE USED TO LOCATE EXCEPTIONS IN LEGAL DESCRIPTIONS (Single Dotted Lines)
- SET CONCRETE MONUMENT

CURVE TABLE

CURVE	RADIUS	LENGTH	BEARING
C1	9665.00'	69.95'	S 87°03'24" E
C2	734.00'	50.44'	S 88°05'51" W
C3	383.00'	178.14'	S 13°30'07" E
C4	117.00'	47.49'	S 15°11'52" E
C5	117.00'	24.74'	S 20°59'26" W
C6	60.00'	16.27'	S 28°40'02" E
C7	467.00'	110.88'	S 36°14'19" W
C8	123.00'	87.33'	N 55°25'50" W
C9	60.00'	10.70'	N 48°38'58" E
C10	60.00'	25.18'	S 12°09'07" E
C11	117.00'	181.19'	N 02°05'39" W
C12	117.00'	97.00'	N 66°01'21" E
C13	123.00'	110.03'	N 64°08'49" E

LINE TABLE

LINE	BEARING	LENGTH	LINE	BEARING	LENGTH	LINE	BEARING	LENGTH
L1	S 89°38'01" E	309.74'	L31	S 60°33'49" E	521.20'	L61	S 65°49'25" W	153.13'
L2	S 34°33'48" E	18.24'	L32	S 29°26'11" W	214.37'	L62	N 89°52'22" E	135.92'
L3	N 89°38'57" W	165.00'	L33	S 60°33'57" E	135.00'	L63	N 05°41'19" W	42.95'
L4	S 00°14'25" E	200.00'	L34	S 29°26'11" W	128.37'	L64	S 29°33'07" W	76.74'
L5	N 89°45'35" E	164.99'	L35	S 47°24'37" W	73.92'	L65	N 38°14'14" E	63.79'
L6	S 00°14'25" E	81.00'	L36	S 53°59'29" W	293.12'	L66	N 66°26'12" E	182.55'
L7	S 89°45'35" W	140.00'	L37	S 58°27'51" W	85.69'	L67	S 84°12'18" W	93.84'
L8	S 03°49'16" E	185.97'	L38	S 89°51'16" W	362.28'	L68	N 87°13'01" W	93.72'
L9	S 86°10'44" W	49.83'	L39	N 00°08'44" W	135.00'	L69	N 55°17'08" W	93.72'
L10	N 03°13'43" W	191.31'	L40	S 83°34'49" W	64.05'	L70	N 46°27'33" W	192.10'
L11	N 89°44'12" W	62.41'	L41	S 00°08'44" E	75.27'	L71	N 46°27'33" W	41.37'
L12	N 89°49'23" E	130.00'	L42	S 35°10'37" W	94.44'	L72	N 46°27'33" W	280.12'
L13	S 00°10'37" E	50.95'	L43	S 60°17'53" W	124.08'	L73	N 42°16'16" E	313.74'
L14	S 26°49'37" E	100.79'	L44	N 89°44'12" W	276.63'	L74	N 89°46'26" E	351.77'
L15	N 86°25'53" E	200.24'	L45	N 14°13'44" E	137.71'	L75	S 00°13'34" E	135.00'
L16	S 05°48'22" W	110.37'	L46	S 54°54'37" W	132.00'	L76	S 89°46'26" W	330.00'
L17	S 27°02'53" W	134.12'	L47	N 21°22'03" W	121.43'	L77	S 69°48'40" W	22.08'
L18	S 89°49'56" W	146.18'	L48	N 00°10'37" W	493.66'	L78	S 42°16'16" W	277.99'
L19	N 89°49'56" E	273.01'	L49	N 27°02'53" E	211.41'	L79	S 46°27'33" E	262.52'
L20	S 57°33'22" E	126.44'	L50	N 27°15'15" W	212.48'	L80	S 43°32'27" W	135.00'
L21	S 34°57'54" E	126.99'	L51	N 00°10'37" W	176.09'	L81	N 89°46'26" E	361.77'
L22	S 00°10'37" E	207.05'	L52	N 43°32'27" E	201.00'	L82	N 89°46'26" E	81.66'
L23	S 83°52'15" E	39.36'	L53	N 46°27'33" W	21.17'	L83	S 51°28'48" E	139.39'
L24	N 89°51'16" E	11.69'	L54	N 43°32'27" E	135.00'	L84	S 49°00'59" W	92.75'
L25	N 00°08'44" W	459.09'	L55	S 46°27'33" E	250.36'	L85	S 68°47'00" W	92.75'
L26	N 01°44'07" E	204.61'	L56	N 43°32'27" E	9.67'	L86	S 89°46'26" W	129.45'
L27	S 69°06'11" E	146.44'	L57	N 36°14'30" W	138.14'	L87	N 00°13'34" W	135.00'
L28	N 53°33'46" W	139.28'	L58	N 63°58'33" E	121.17'			
L29	N 48°19'47" E	120.20'	L59	S 68°24'57" E	121.17'			
L30	S 87°29'32" E	250.91'	L60	S 47°58'51" E	121.17'			

NOTES

3/4 INCH IRON PIPE SET AT ALL LOT CORNERS AND POINTS OF CURVATURE UNLESS OTHERWISE NOTED. ROADWAY MEDIAN OUTLOT BOUNDARIES WILL BE AT THE BACK OF CURB AS CONSTRUCTED.

ALL MEASUREMENTS ARE SHOWN IN FEET AND DECIMAL PARTS THEREOF.

DIMENSIONS SHOWN ALONG CURVES ARE ARC DISTANCES.

DIMENSIONS ENCLOSED WITH () ARE RECORD DATA. ALL OTHER DIMENSIONS ARE MEASURED.

ALL EASEMENTS ARE HEREBY GRANTED UNLESS OTHERWISE NOTED.

V.U.E. - INDICATES VILLAGE UTILITY EASEMENT HEREBY GRANTED. SEE PROVISIONS FOR DETAILS.

D.E. - INDICATES DRAINAGE EASEMENT HEREBY GRANTED. SEE PROVISIONS FOR DETAILS.

P.U.E. - INDICATES PUBLIC UTILITY EASEMENT HEREBY GRANTED. SEE PROVISIONS FOR DETAILS.

B.L. - BUILDING SETBACK LINE

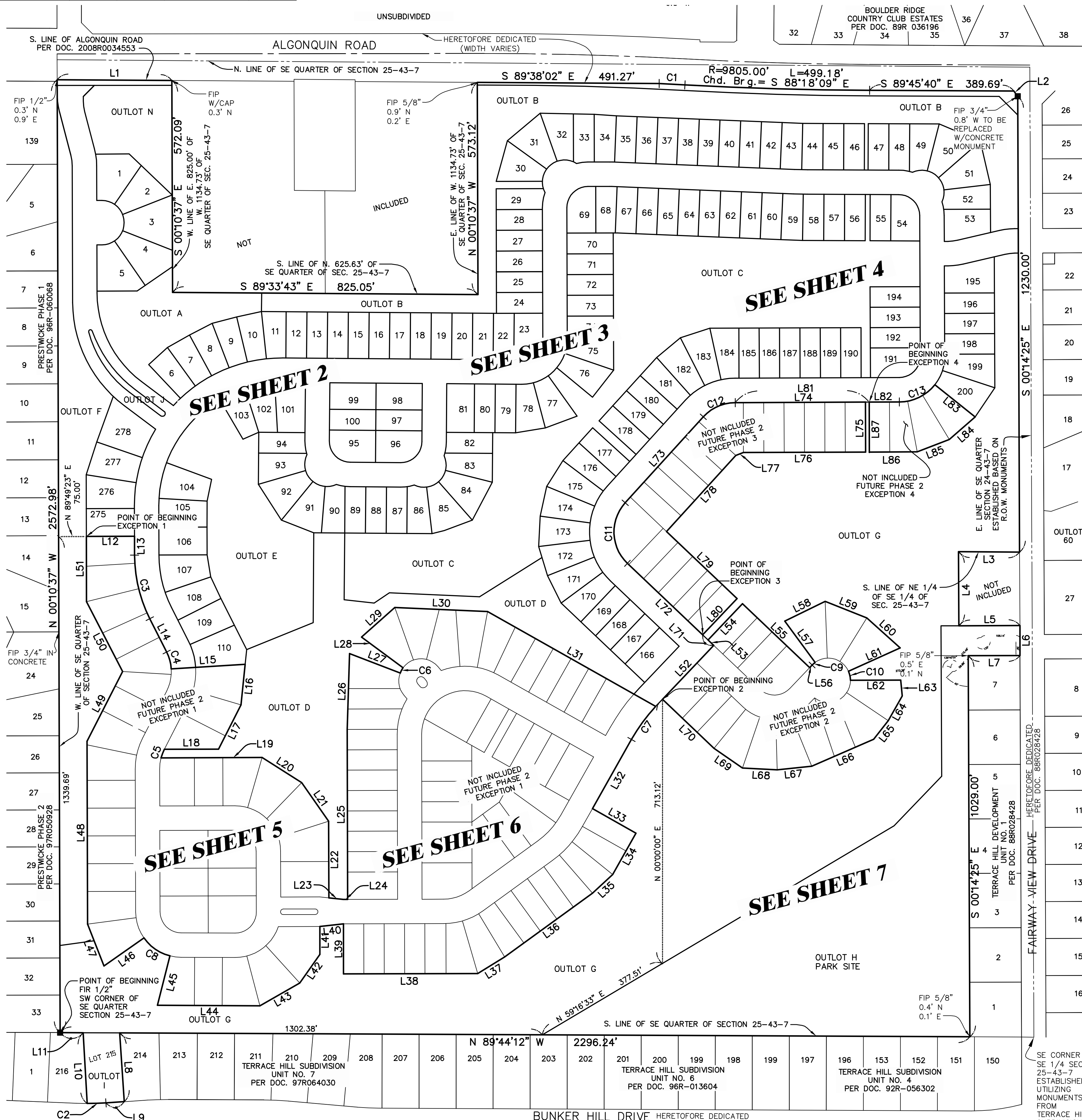
THE BEARINGS SHOWN ARE BASED UPON THE WEST LINE OF PHASE 1 BEING N 00°10'37" W (ASSUMED).

GAP IN LOT & OUTLOT NUMBERING DUE TO THE PREDEFINED LOT NUMBERING WITHIN THE ENTIRE TRAILS OF WOODS CREEK DEVELOPMENT.

OUTLOTS G, H AND I TO BE DEDICATED TO VILLAGE. ALL OTHER OUTLOTS, INCLUDING MEDIANS TO BE OWNED AND MAINTAINED BY THE HOMEOWNERS ASSOCIATION.

F.I.P. = FOUND IRON PIPE (Ø AS SHOWN)
F.I.R. = FOUND IRON ROD (Ø AS SHOWN)

THERE SHALL BE NO DIRECT VEHICULAR ACCESS TO ALGONQUIN ROAD FROM OUTLOTS B OR N.



DRAWING PATH: F:\M2135\UNCS\SURVEY\DRAWINGS\PLATS\SUBPLAT-1.DWG
PLOT FILE CREATED: 7/10/2020 BY: TONY BLUIS

PREPARED FOR:
PULTE HOME COMPANY, LLC
1900 E. SCHAUMBURG ROAD, SUITE 300
SCHAUMBURG, IL 60173
(847) 230-2592

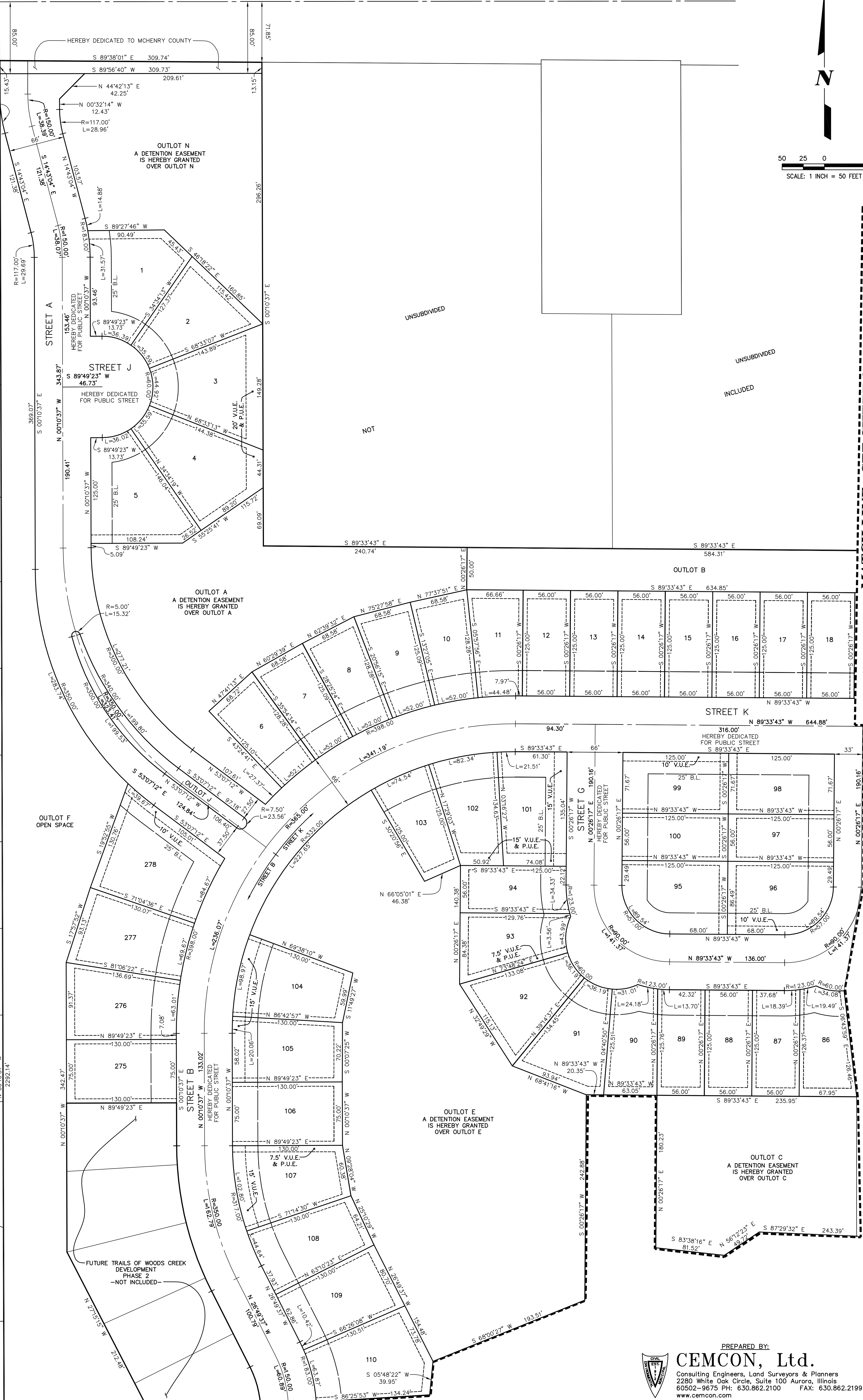
PREPARED BY:
CEMCON, Ltd.
Consulting Engineers, Land Surveyors & Planners
2280 White Oak Circle, Suite 100 Aurora, Illinois
60502-9675 PH: 630.862.2100 FAX: 630.862.2199
www.cemcon.com

DISC NO.: 402136 FILE NAME: SUBPLAT-1
DRAWN BY: AJB FLD. BK. / PG. NO.: D83\51-54
COMPLETION DATE: 07-10-20 JOB NO.: 402.136
Copyright © 2020 Cemcon, Ltd. All rights reserved.



50 25 0 50
SCALE: 1 INCH = 50 FEET

ALGONQUIN ROAD



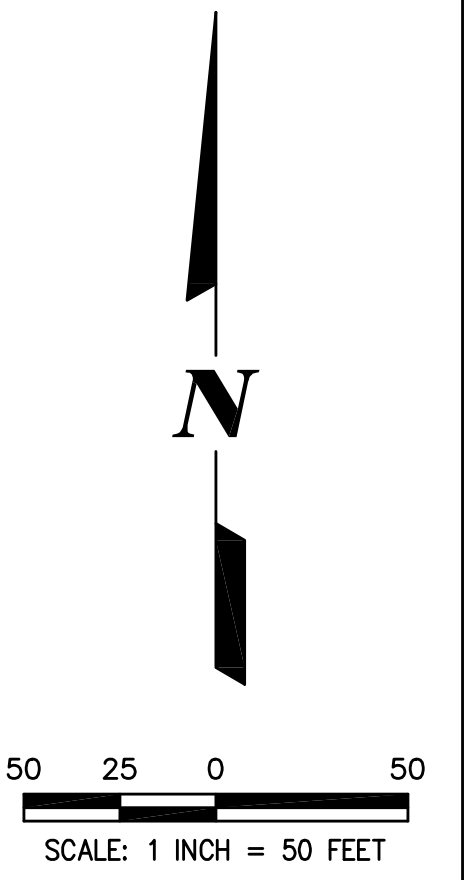
MATCH LINE - SEE SHEET 3

MATCH LINE - SEE SHEET 5

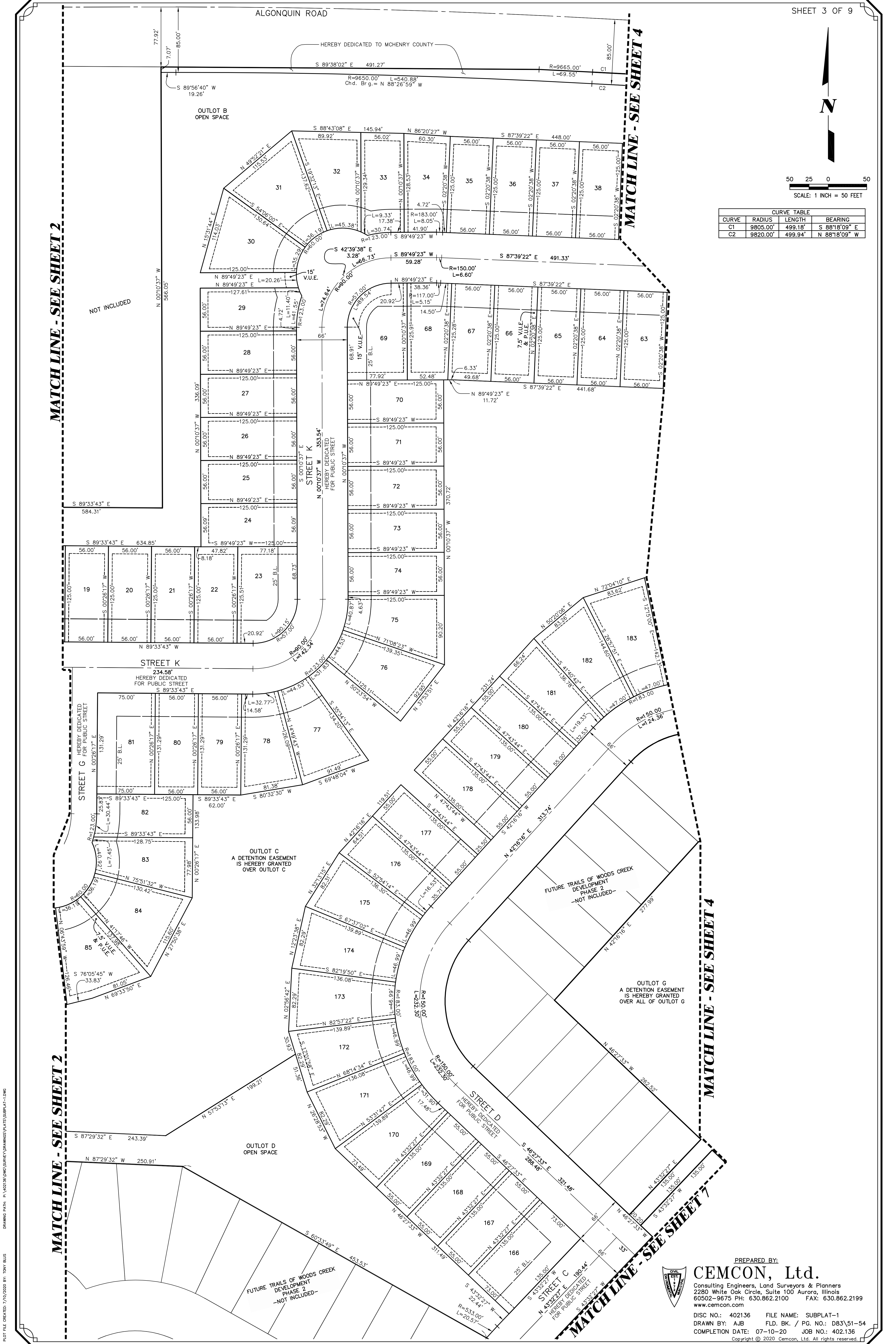
PLOT FILE CREATED: 7/10/2020 BY: TONY BLUS
DRAWING PATH: F:\2021\3\WMS\DRAWINGS\PLATS\SUBPLAT-1.DWG



PREPARED BY:
CEMCON, Ltd.
Consulting Engineers, Land Surveyors & Planners
2280 White Oak Circle, Suite 100 Aurora, Illinois
60502-9675 PH: 630.862.2100 FAX: 630.862.2199
www.cemcon.com
DISC NO.: 402136 FILE NAME: SUBPLAT-1
DRAWN BY: AJB FLD. BK. / PG. NO.: D83\51-54
COMPLETION DATE: 07-10-20 JOB NO.: 402.136
Copyright © 2020 Cemcon, Ltd. All rights reserved.



CURVE TABLE			
CURVE	RADIUS	LENGTH	BEARING
C1	9805.00'	499.18'	S 88°18'09" E
C2	9820.00'	499.94'	N 88°18'09" W



MATCH LINE - SEE SHEET 2

MATCH LINE - SEE SHEET 4

MATCH LINE - SEE SHEET 4

MATCH LINE - SEE SHEET 2

MATCH LINE - SEE SHEET 7

DRAWING PATH: F:\2023\UNION\DRAWINGS\PLATS\SUBPLAT-1.DWG

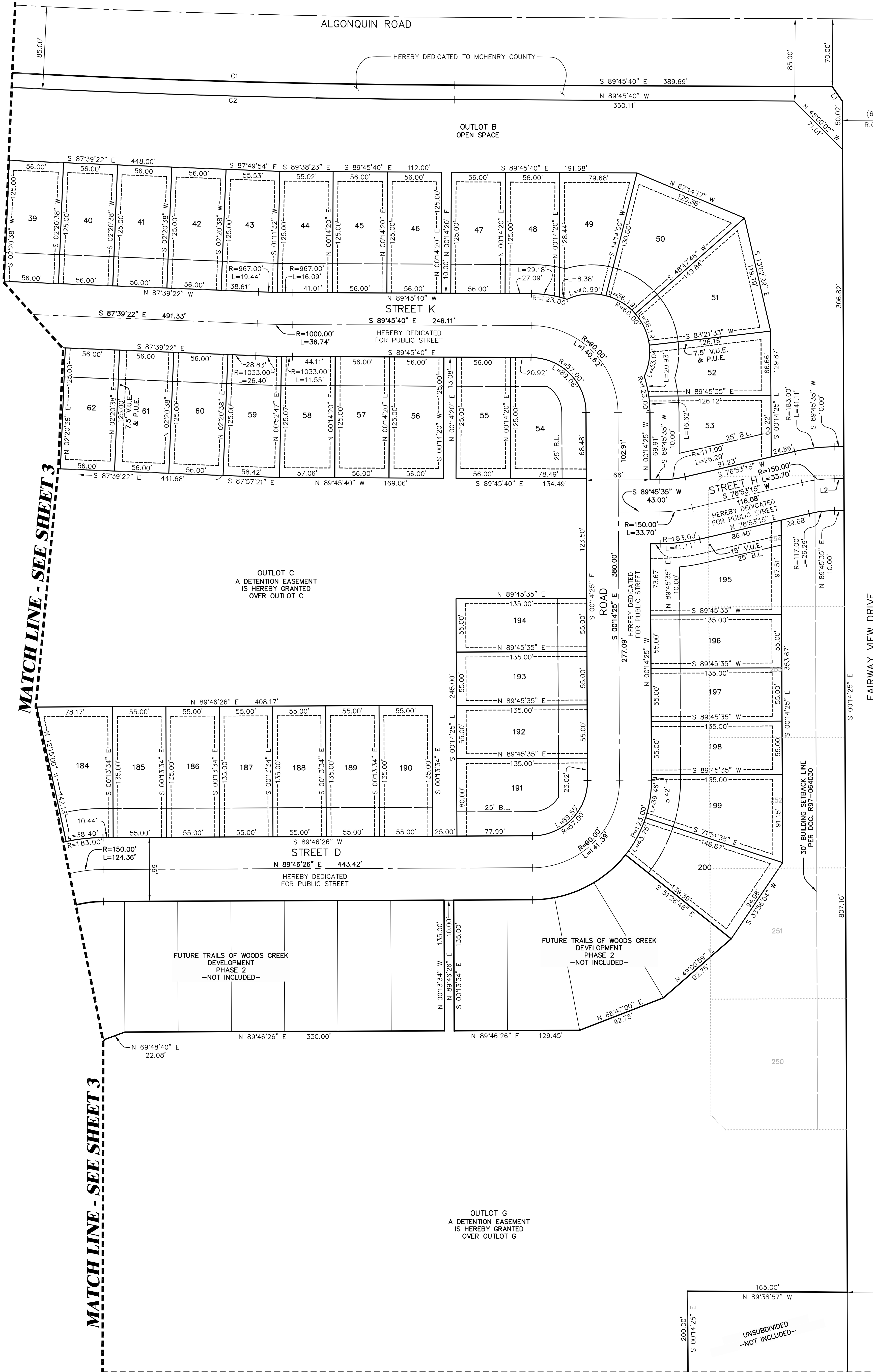
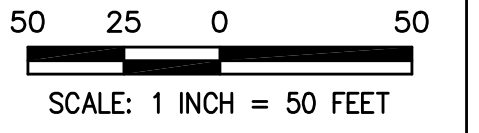
PLOT FILE CREATED: 7/10/2023 BY: TONY BLUS

PREPARED BY:
CEMCON, Ltd.
Consulting Engineers, Land Surveyors & Planners
2280 White Oak Circle, Suite 100 Aurora, Illinois
60502-9675 PH: 630.862.2100 FAX: 630.862.2199
www.cemcon.com

DISC NO.: 402136 FILE NAME: SUBPLAT-1
DRAWN BY: AJB FLD. BK. / PG. NO.: D83\51-54
COMPLETION DATE: 07-10-20 JOB NO.: 402136
Copyright © 2020 Cemcon, Ltd. All rights reserved.

CURVE TABLE			
CURVE	RADIUS	LENGTH	BEARING
C1	9805.00'	499.18'	S 88°18'09" E
C2	9820.00'	499.94'	N 88°18'09" W

LINE TABLE		
LINE	BEARING	LENGTH
L1	S 34°33'48" E	18.24'
L2	S 89°45'35" W	10.00'



MATCH LINE - SEE SHEET 3

MATCH LINE - SEE SHEET 3

MATCH LINE - SEE SHEET 7

- 26
- 25
- 24
- 23
- 22
- 21
- 20
- 19
- 18
- 17
- OUTLOT 60

FAIRWAY VIEW ESTATES
PER DOC. 2004R0061673

NOTTINGHAM DRIVE

FAIRWAY VIEW DRIVE
HEREBY DEDICATED
PER DOC. 88R028428

FAIRWAY VIEW ESTATES
PER DOC. 2004R0061673

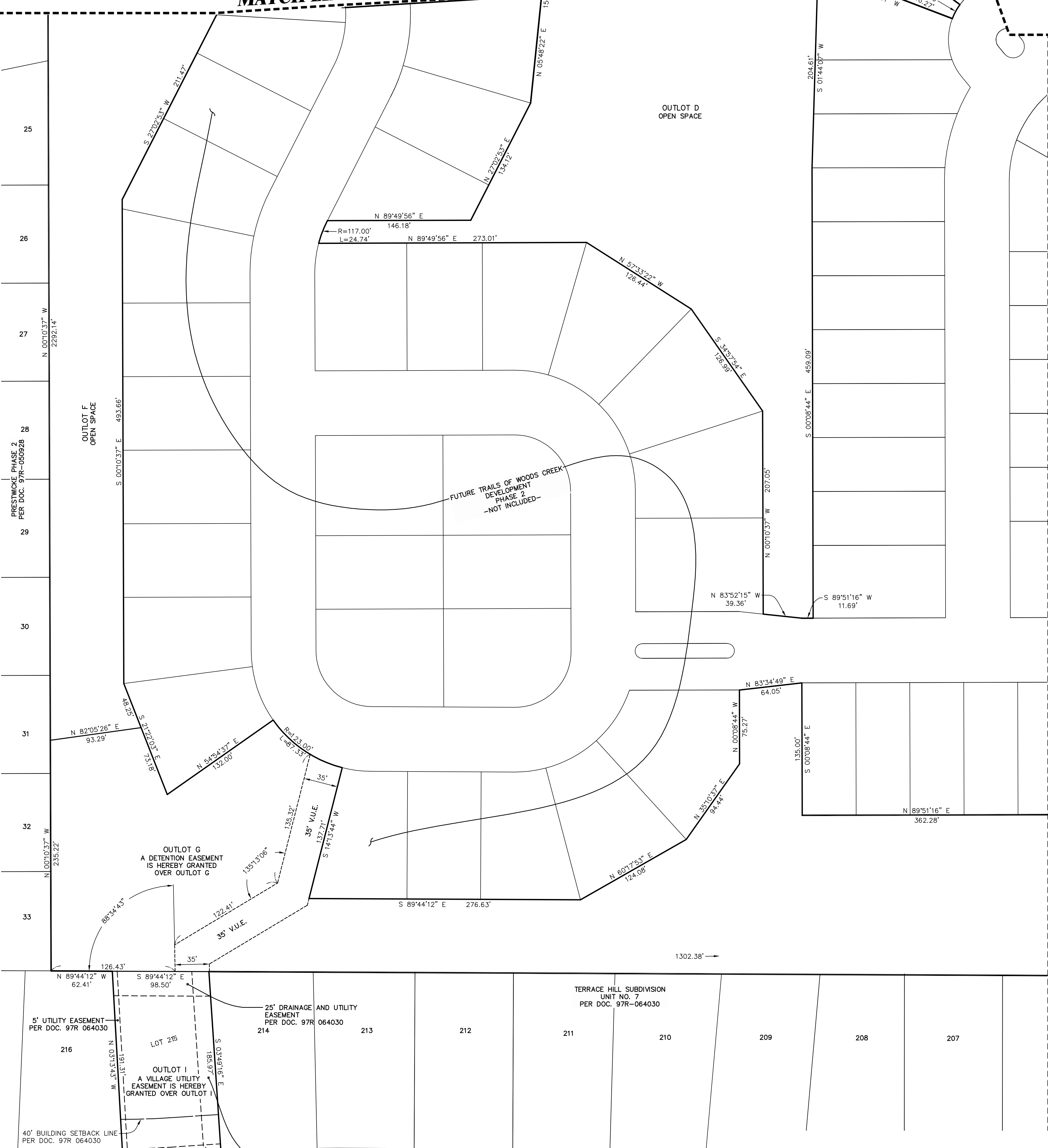
CEMCON, Ltd.
 Consulting Engineers, Land Surveyors & Planners
 2280 White Oak Circle, Suite 100 Aurora, Illinois
 630-967-5136 PH: 630.862.2100 FAX: 630.862.2199
 www.cemcon.com
 DISC NO.: 402136 FILE NAME: SUBPLAT-1
 DRAWN BY: AJB FLD. BK. / PG. NO.: D83\51-54
 COMPLETION DATE: 07-10-20 JOB NO.: 402136
 Copyright © 2020 Cemcon, Ltd. All rights reserved.



50 25 0 50
SCALE: 1 INCH = 50 FEET

MATCH LINE - SEE SHEET 2

MATCH LINE - SEE SHEET 6

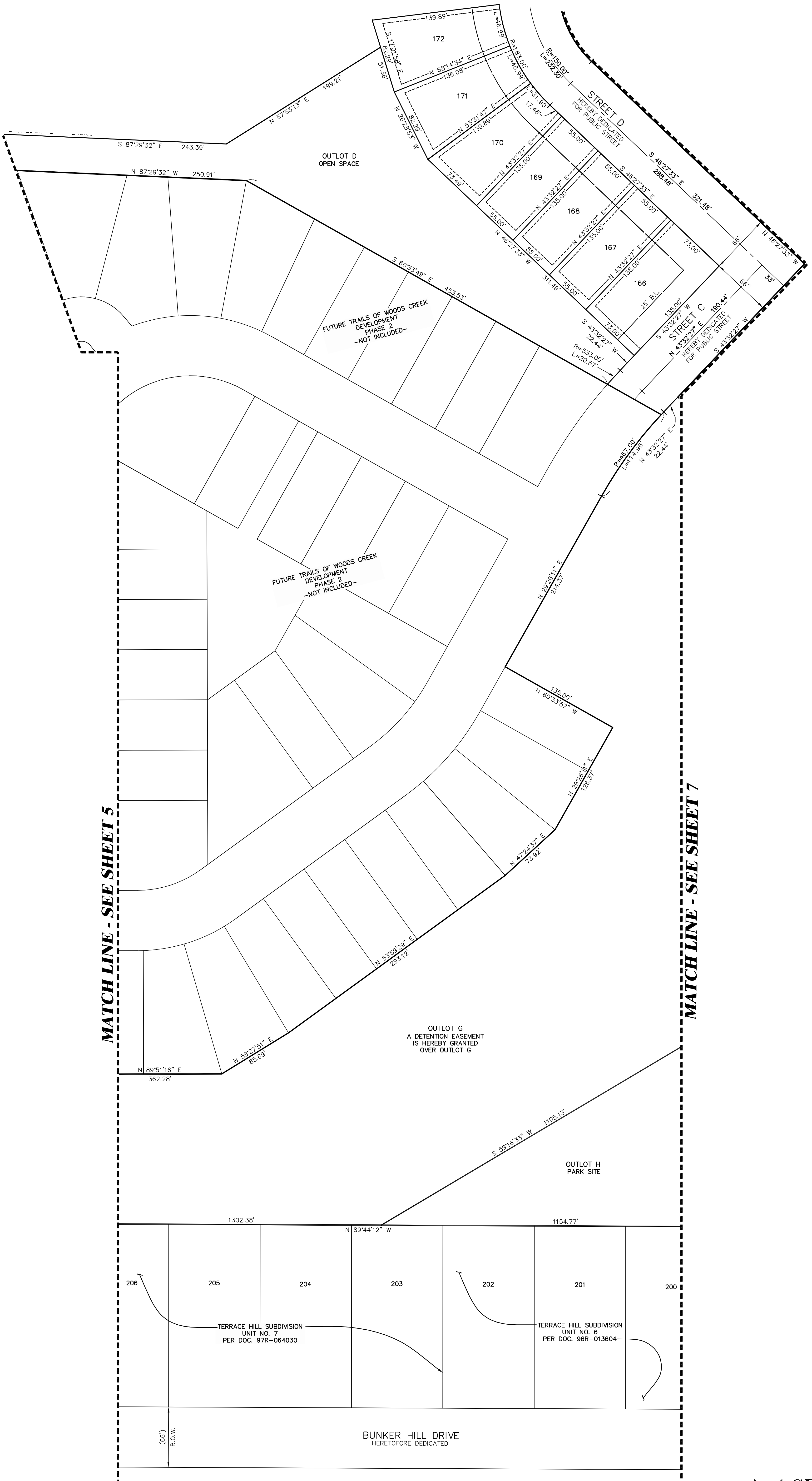


DRAWING PATH: F:\2021\36\36\SURVEY\DRAWINGS\PLATS\SUBPLAT-1.DWG
PLOT FILE CREATED: 7/10/2020 BY: TONY BLUES

PREPARED BY:
CEMCON, Ltd.
Consulting Engineers, Land Surveyors & Planners
2280 White Oak Circle, Suite 100 Aurora, Illinois
60502-9675 PH: 630.862.2100 FAX: 630.862.2199
www.cemcon.com
DISC NO.: 402136 FILE NAME: SUBPLAT-1
DRAWN BY: AJB FLD. BK. / PG. NO.: D83\51-54
COMPLETION DATE: 07-10-20 JOB NO.: 402.136
Copyright © 2020 Cemcon, Ltd. All rights reserved.



50 25 0 50
SCALE: 1 INCH = 50 FEET



MATCH LINE - SEE SHEET 5

MATCH LINE - SEE SHEET 7

OUTLOT G
A DETENTION EASEMENT
IS HEREBY GRANTED
OVER OUTLOT G

OUTLOT H
PARK SITE

TERRACE HILL SUBDIVISION
UNIT NO. 7
PER DOC. 97R-064030

TERRACE HILL SUBDIVISION
UNIT NO. 6
PER DOC. 96R-013604

BUNKER HILL DRIVE
HERETOFORE DEDICATED

(66')
R.O.W.



PREPARED BY:
CEMCON, Ltd.
Consulting Engineers, Land Surveyors & Planners
2280 White Oak Circle, Suite 100 Aurora, Illinois
60502-9675 PH: 630.862.2100 FAX: 630.862.2199
www.cemcon.com
DISC NO.: 402136 FILE NAME: SUBPLAT-1
DRAWN BY: AJB FLD. BK. / PG. NO.: D83\51-54
COMPLETION DATE: 07-10-20 JOB NO.: 402.136
Copyright © 2020 Cemcon, Ltd. All rights reserved.

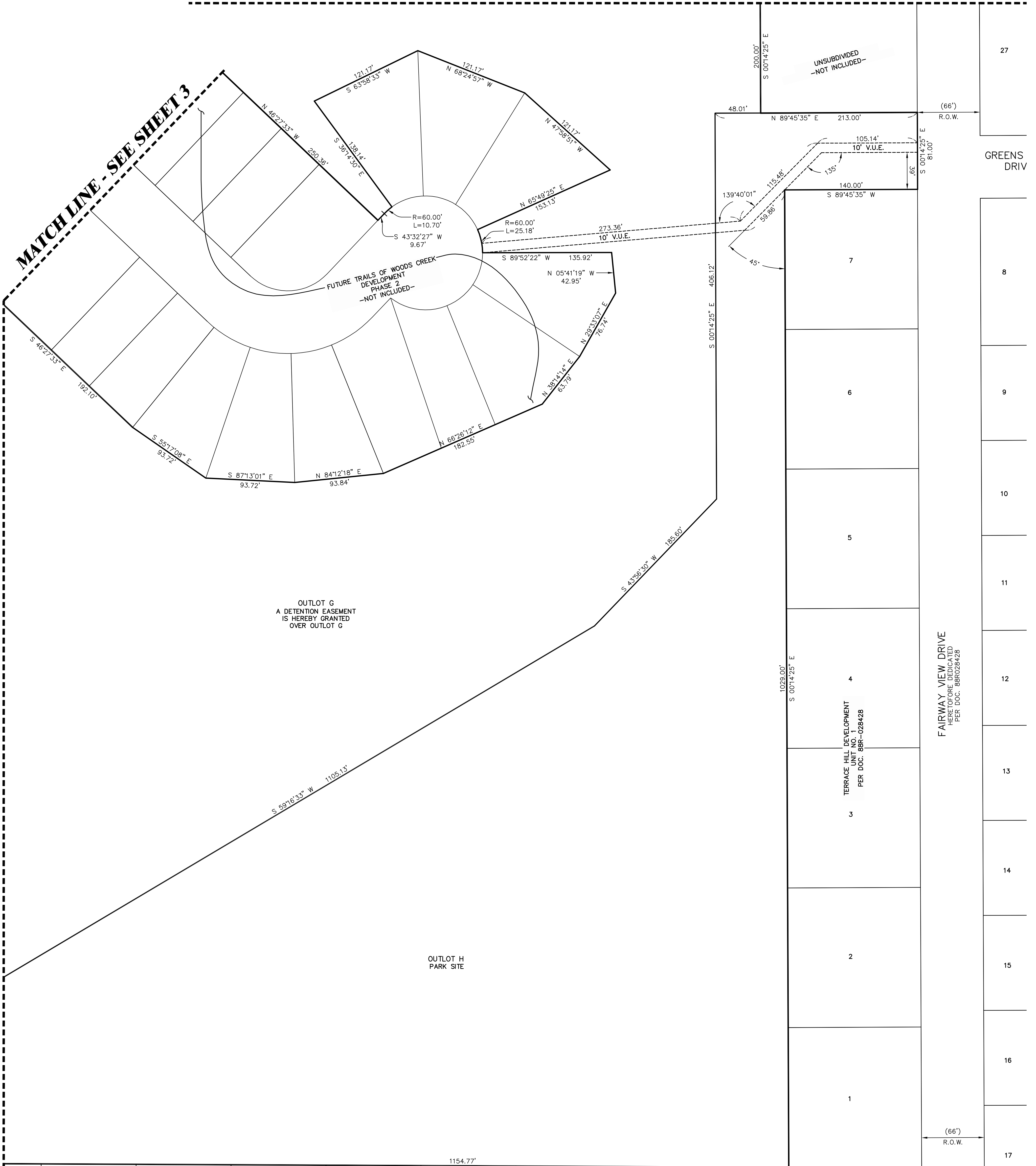


50 25 0 50
SCALE: 1 INCH = 50 FEET

MATCH LINE - SEE SHEET 4

MATCH LINE - SEE SHEET 3

MATCH LINE - SEE SHEET 6



TERRACE HILL SUBDIVISION UNIT NO. 6 PER DOC. 96R-013604					TERRACE HILL SUBDIVISION UNIT NO. 4 PER DOC. 92R-056302				
199	198	199	197	196	153	152	151	150	

PREPARED BY:
CEMCON, Ltd.
 Consulting Engineers, Land Surveyors & Planners
 2280 White Oak Circle, Suite 100 Aurora, Illinois
 60502-9675 PH: 630.862.2100 FAX: 630.862.2199
 www.cemcon.com

DISC NO.: 402136 FILE NAME: SUBPLAT-1
 DRAWN BY: AJB FLD. BK. / PG. NO.: D83\51-54
 COMPLETION DATE: 07-10-20 JOB NO.: 402.136
 Copyright © 2020 Cemcon, Ltd. All rights reserved.

DRAWING PATH: F:\2021\36\UNCS\SURVEY\DRAWINGS\PLATS\SUBPLAT-1.DWG
PLOT FILE CREATED: 7/10/2020 BY: TONY BLUIS