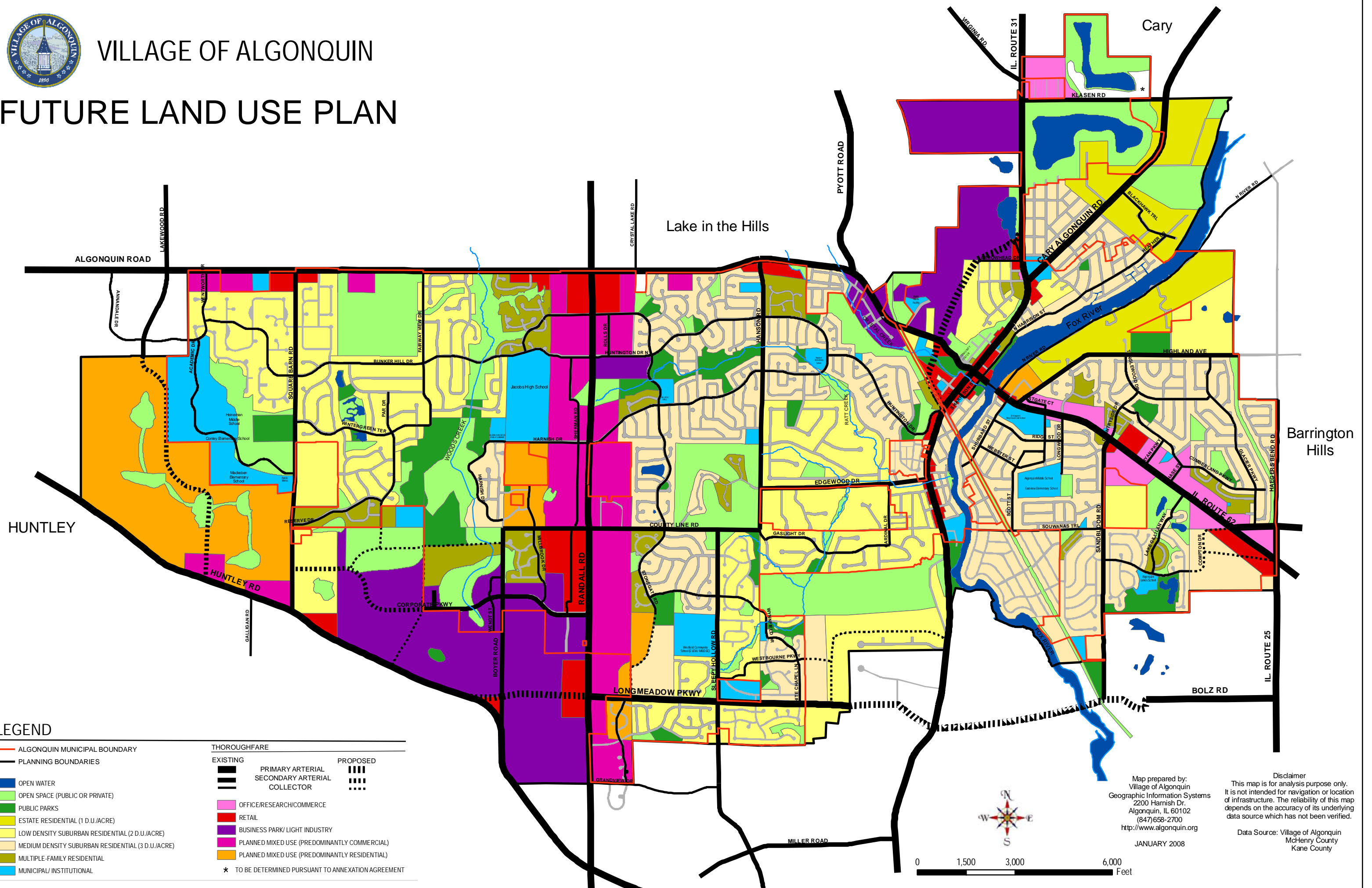




VILLAGE OF ALGONQUIN

FUTURE LAND USE PLAN



LEGEND

- ALGONQUIN MUNICIPAL BOUNDARY
 - PLANNING BOUNDARIES
 - OPEN WATER
 - OPEN SPACE (PUBLIC OR PRIVATE)
 - PUBLIC PARKS
 - ESTATE RESIDENTIAL (1 D.U./ACRE)
 - LOW DENSITY SUBURBAN RESIDENTIAL (2 D.U./ACRE)
 - MEDIUM DENSITY SUBURBAN RESIDENTIAL (3 D.U./ACRE)
 - MULTIPLE-FAMILY RESIDENTIAL
 - MUNICIPAL/ INSTITUTIONAL
- | THOROUGHFARE | |
|--|---|
| EXISTING | PROPOSED |
| PRIMARY ARTERIAL | PRIMARY ARTERIAL |
| SECONDARY ARTERIAL | SECONDARY ARTERIAL |
| COLLECTOR | COLLECTOR |
| OFFICE/RESEARCH/COMMERCE | |
| RETAIL | |
| BUSINESS PARK/ LIGHT INDUSTRY | |
| PLANNED MIXED USE (PREDOMINANTLY COMMERCIAL) | |
| PLANNED MIXED USE (PREDOMINANTLY RESIDENTIAL) | |
| * TO BE DETERMINED PURSUANT TO ANNEXATION AGREEMENT | |

Map prepared by:
 Village of Algonquin
 Geographic Information Systems
 2200 Harnish Dr.
 Algonquin, IL 60102
 (847) 658-2700
<http://www.algonquin.org>

JANUARY 2008

Disclaimer
 This map is for analysis purpose only. It is not intended for navigation or location of infrastructure. The reliability of this map depends on the accuracy of its underlying data source which has not been verified.

Data Source: Village of Algonquin
 McHenry County
 Kane County

