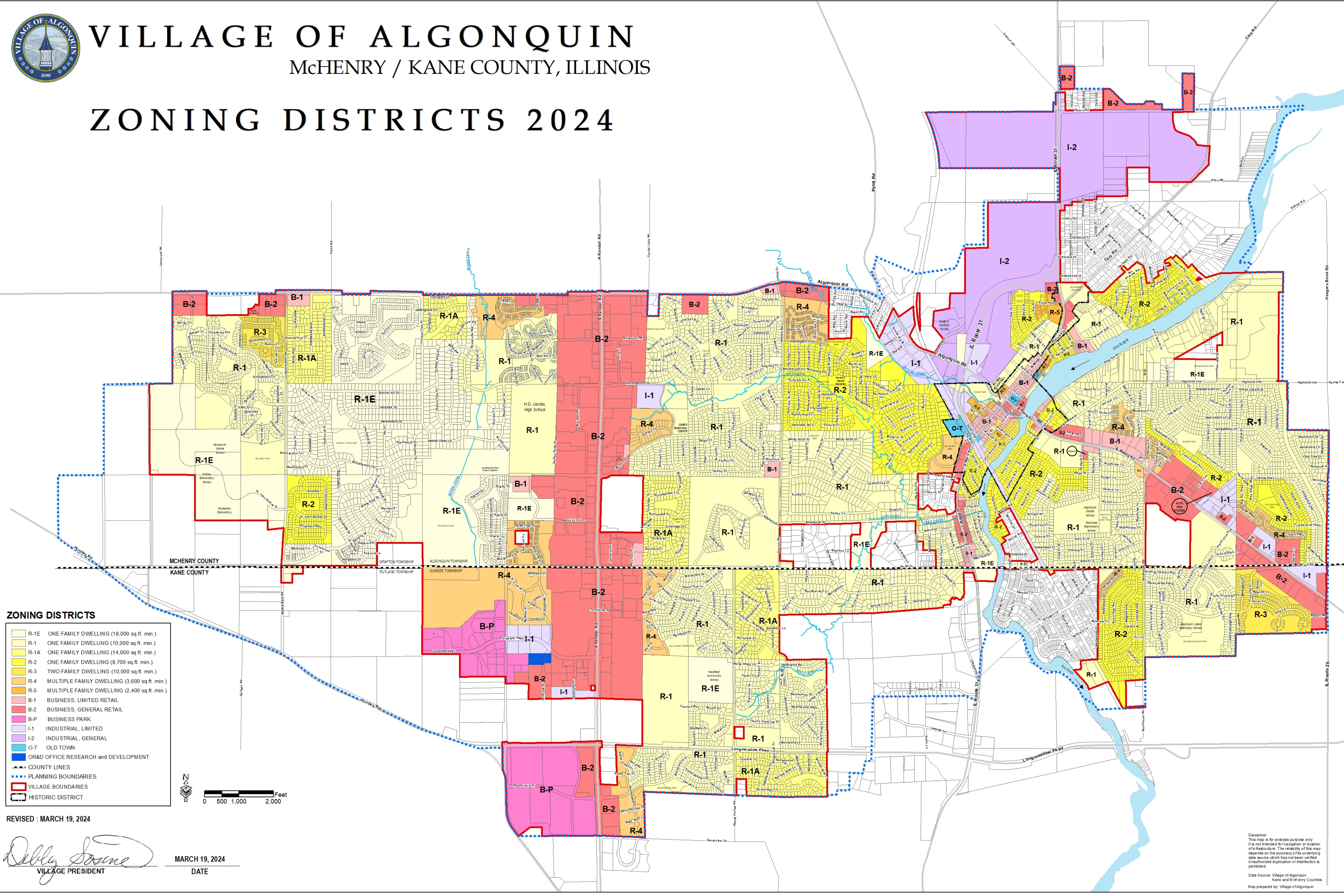




VILLAGE OF ALGONQUIN

McHENRY / KANE COUNTY, ILLINOIS

ZONING DISTRICTS 2024



ZONING DISTRICTS

- R-1E ONE FAMILY DWELLING (18,000 sq. ft. min.)
- R-1 ONE FAMILY DWELLING (10,000 sq. ft. min.)
- R-1A ONE FAMILY DWELLING (14,000 sq. ft. min.)
- R-2 ONE FAMILY DWELLING (8,700 sq. ft. min.)
- R-3 TWO FAMILY DWELLING (10,000 sq. ft. min.)
- R-4 MULTIPLE FAMILY DWELLING (3,600 sq. ft. min.)
- R-5 MULTIPLE FAMILY DWELLING (2,400 sq. ft. min.)
- B-1 BUSINESS, LIMITED RETAIL
- B-2 BUSINESS, GENERAL RETAIL
- B-P BUSINESS PARK
- I-1 INDUSTRIAL, LIMITED
- I-2 INDUSTRIAL, GENERAL
- O-T OLD TOWN
- OR&D OFFICE RESEARCH and DEVELOPMENT
- COUNTY LINES
- PLANNING BOUNDARIES
- VILLAGE BOUNDARIES
- HISTORIC DISTRICT

REVISED : MARCH 19, 2024

Dolly Soane
VILLAGE PRESIDENT

MARCH 19, 2024
DATE

Disclaimer:
This map is for analysis purpose only. It is not intended for navigation or location of infrastructure. The reliability of this map depends on the accuracy of the underlying data source which has not been verified. Unauthorized duplication or distribution is prohibited.
Data Source: Village of Algonquin, Kane and McHenry Counties
Map prepared by: Village of Algonquin